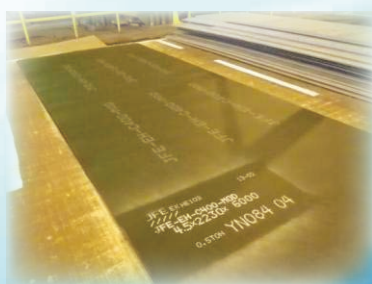




# Guidelines for fabrication JFE's Abrasion-Resistant Steel Plate **EVERHARD™**

**- WELDING -**



JFE Steel Corporation





## Contents

Guidelines for Fabrication of JFE's Abrasion-Resistant Steel Plate	
EVERHARD: Welding .....	1
Crack-Free Welds . . . It's Simple with EVERHARD! .....	2
Preheating Temperature Guidelines .....	3
Optimum Preheating Methods for EVERHARD .....	4
What are Cold Crackings?.....	6
Welding Heat Input for EVERHARD .....	8
Suitable Welding Consumables for EVERHARD .....	9
Welding Shield Gas for EVERHARD.....	10
Welding Start/Final Ends and Gap .....	11
Hardfacing of EVERHARD .....	12
Post Weld Heat Treatment of EVERHARD .....	12
Primer Treatment of EVERHARD .....	13
Storage .....	13

"EVERHARD" is a registered trademark of JFE Steel Corporation in Japan and other countries.

# Guidelines for Fabrication of JFE's Abrasion-Resistant Steel Plate EVERHARD: Welding

In 1955, JFE Steel began manufacturing abrasion-resistant steel plates before any other company. Since that time, these products, trade-named EVERHARD, have been used in a wide range of applications, beginning with industrial machinery and also including civil engineering and construction equipment, mining equipment, and agricultural machinery.

Today, EVERHARD is recognized as an indispensable product that ensures complete customer satisfaction.

This catalog, "Guidelines for fabrication of JFE's Abrasion-Resistant Steel Plates EVERHARD: Welding," was prepared so that all customers can enjoy the outstanding performance of EVERHARD effectively and with full confidence. We hope that the information contained herein will be useful.

Thank you for using EVERHARD, and we look forward to continuing to serve you in the future.

## ■ Features of EVERHARD

Type	Features	Brand name
<b>C</b> (Standard Series)	General purpose EVERHARD products. Economical alloy design with priority on hardness of steel plates. Strict range of surface hardness and reduced variations in formability.	EVERHARD-C340
		EVERHARD-C400
		EVERHARD-C450
		EVERHARD-C500
		EVERHARD-C550
		EVERHARD-C600
<b>C-LE</b> (High Toughness Series)	Guarantees low temperature toughness at -40°C (-40°F). Full line of abrasion-resistant performance up to Brinell hardness 500 grade. Alloy design which considers internal hardness.	EVERHARD-C400LE
		EVERHARD-C450LE
		EVERHARD-C500LE
<b>SP</b> (Super Abrasion-Resistant Series)	Product that out-performs even the EVERHARD series. Provides abrasion resistance exceeding Brinell hardness 500 grade.	EVERHARD-SP

All information contained in this catalog assumes use of EVERHARD based on a basic understanding of correct welding and within the range of the business experience of JFE Steel Corporation. JFE Steel Corporation cannot accept responsibility for compatibility with individual cases; however, in case of problems, please feel free to consult with this company.



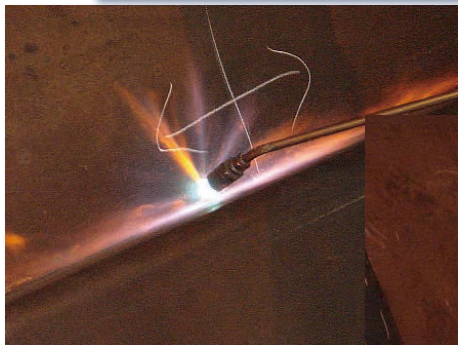
## Crack-Free Welds . . . It's Simple with EVERHARD!

Because abrasion-resistant steel plates are hard, which is one of their distinctive features, these materials generally have high cold cracking sensitivity (also called hydrogen-induced or delayed crack sensitivity). However, in EVERHARD, JFE Steel uses the optimum alloy design to improve cold cracking resistance so that users can easily obtain sound, crack-free welds.

This product design technology, which is used in all EVERHARD, is based on a knowledge of metallurgy cultivated over many years by testing of weld joints, and is backed by theoretical analysis.

Cold crackings are caused by diffusible hydrogen. In welding, preheating is normally performed in advance by raising the temperature of the joint in order to drive out diffusible hydrogen into the atmosphere at welding sites, preheating is widely known as a reliable, effective method for preventing cold crackings. However, preheating conditions must be optimized for the steel material which is actually being welded.

This catalog presents use guidelines for the preheating temperature, preheating methods, temperature measurement methods, and related items to enable safe, economical, worry-free use of EVERHARD products. These guidelines also provide useful advice on types of welding work in which the conditions are generally difficult, such as tack welding, root pass welding, etc.



# Preheating Temperature Guidelines

The preheating temperature of EVERHARD differs depending on the welding method.

The following table gives guidelines for the minimum preheating temperature corresponding to the welding method, as determined based on the type of EVERHARD, the strength grade (the strength level increases with hardness level), and the plate thickness.

## Recommended Minimum Preheating Temperature

Brand name	Welding method	Thickness(mm)									
		10	20	30	40	50	60	70	80	90	101.6
JFE-HITEN780S	SMAW, FCAW	75℃	100℃		>100℃						
	GMAW	Room temperature	50℃		>50℃						
JFE-HITEN780LE	SMAW, FCAW	<100℃		100℃							
	GMAW	Room temperature									
EVERHARD-360	SMAW, FCAW	50℃	75℃	100℃							
	GMAW	Room temperature		50℃							
EVERHARD-400	SMAW, FCAW	75℃	125℃								
	GMAW	Room temperature	75℃								
EVERHARD-500	SMAW, FCAW	125℃	175℃		175-200℃						
	GMAW	Room temperature	75℃	125℃	>125℃						
EVERHARD-360A	SMAW, FCAW	100℃		150℃	>150℃						
	GMAW	75℃		125℃	>125℃						
EVERHARD-500A	SMAW, FCAW	125℃		175℃	175-200℃						
	GMAW	100℃		150℃	>150℃						
EVERHARD-C340	SMAW, FCAW					125℃			>125℃ (max. 160mm)		
	GMAW					75℃	>75℃		100℃ (max. 160mm)		
EVERHARD-C400	SMAW, FCAW	50℃	75℃	100℃		>125℃					
	GMAW	Room temperature		50℃		>75℃					
EVERHARD-C450	SMAW, FCAW	75℃	125℃			>125℃					
	GMAW	Room temperature	75℃			100℃	>100℃				
EVERHARD-C500	SMAW, FCAW	125℃	175℃		175-200℃						
	GMAW	Room temperature	75℃	125℃	>125℃	>150℃					
EVERHARD-C550	SMAW, FCAW	200℃									
	GMAW	175℃									
EVERHARD-C600	SMAW, FCAW	200℃									
	GMAW	175℃									
EVERHARD-C400LE	SMAW, FCAW	75℃	100℃		125℃		>125℃				
	GMAW	Room temperature			75℃	>75℃	100℃				
EVERHARD-C450LE	SMAW, FCAW	75℃	125℃		>125℃	200℃					
	GMAW	Room temperature	75℃		100℃	175℃					
EVERHARD-C500LE	SMAW, FCAW	125℃		175℃ (32mm<) 175-200℃			200℃				
	GMAW	Room temperature	75℃	125℃ (32mm<)	175℃						
EVERHARD-SP	SMAW, FCAW	100℃		175℃		175-200℃					
	GMAW	75℃		175℃							

SMAW (Shield metal arc welding): Welding with a coated electrode.

FCAW (Flux cored arc welding) : Welding with a flux cored wire.

GMAW (Gas metal arc welding): Welding methods using a welding wire in combination with a shield gas, for example, carbon dioxide gas shielded arc welding, etc.

# Optimum Preheating Methods for EVERHARD

## Precautions when welding EVERHARD with different grades

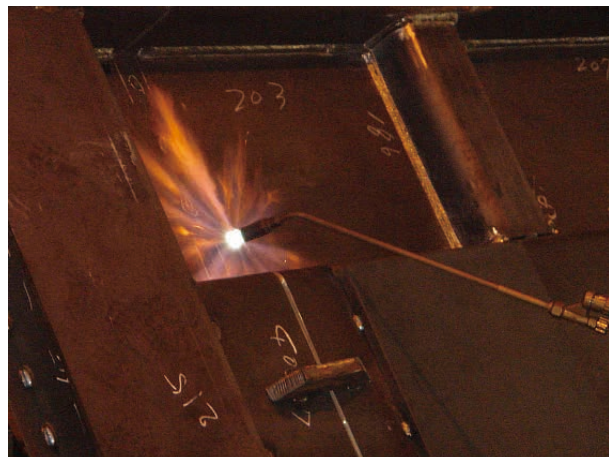
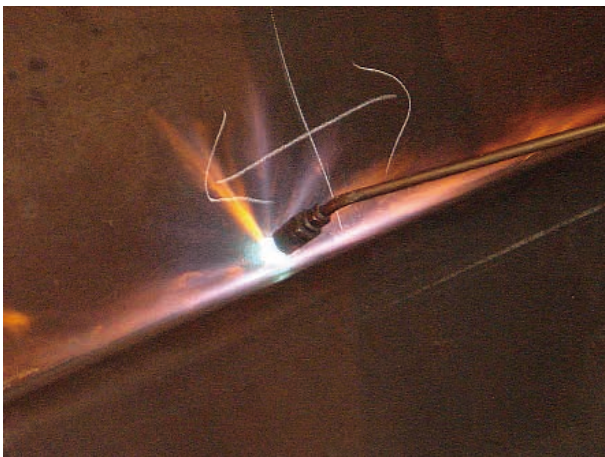
When welding pairs of EVERHARD plates of different grades and/or plate thicknesses, the preheating temperature is basically determined as follows.

- Select the higher recommended preheating temperature.

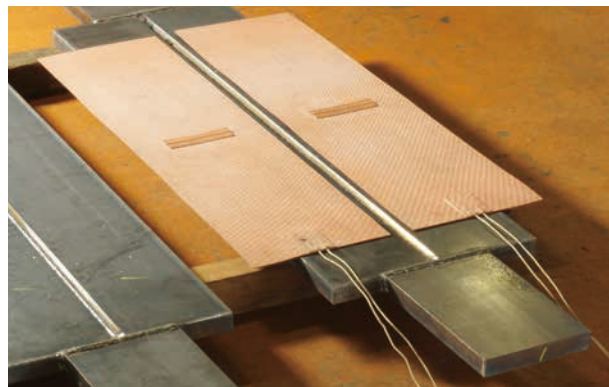
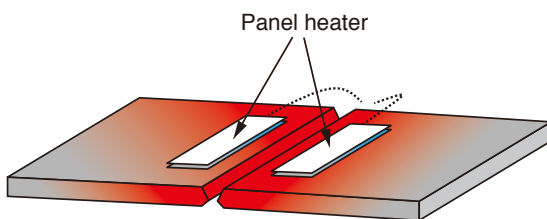
## ■ Optimum preheating method

### Preheating method

Preheating should be performed with gas or an electric heater. Normally, the heating location is near the weld, but in some cases the entire joint is preheated.



Example of preheating with gas burner



Example of preheating with electric heater (panel heater)



## ■ Temperature Measurement

Temperature measurement is extremely important for avoiding preheating failure. Multiple points on the welding line should be checked whether each point has achieved the specified temperature. If possible, check not only the front side, but also the back side.

## ■ Guidelines for Temperature Measurement

Measurement position

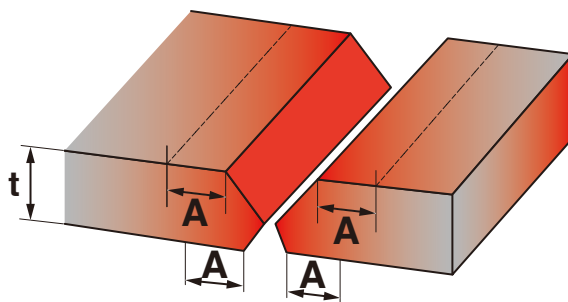
(See schematic diagram)

$t \leq 50$ :  $A = 4 \times t \leq 50$

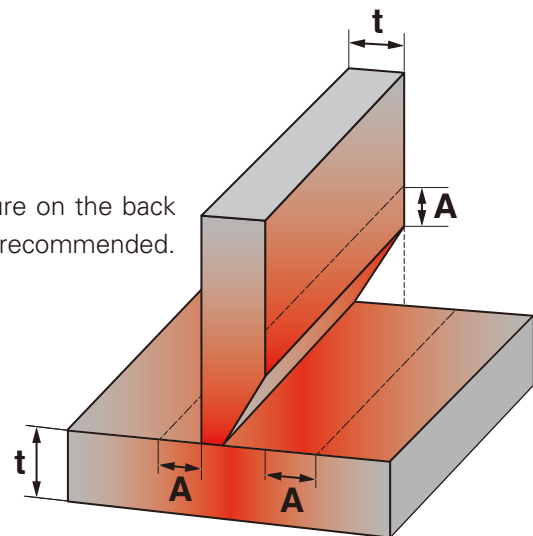
$t > 50$ :  $A = 75$

(Unit: mm)

\* To be more certain, measurement of the temperature on the back side of the weld (opposite side of the heated side) is recommended.



Butt joint



T joint (fillet welding)

Timing: Although only the surface temperature is measured, what is important is the internal temperature of the plate. The optimum timing of temperature measurement is when the plate temperature has become stable after the temperature rise has slowed. As a reference, for 25mm thick plate, it takes about 2 minutes of which temperature becomes stable.

Measuring devices: The following temperature measuring devices are commercially available and can be used.

- Temperature-indicating crayon (also called temperature chalk) or paint (also called thermopaint, heat sensitive paint, etc.)
- Thermocouple
- Thermometer (can be either contact or noncontact type)



Example of temperature measurement by using a noncontact type thermometer



Example of temperature-indicating crayon  
Temp Stick™, manufactured by Caltech Engineering Services  
(<http://www.caltechindia.com/TempSticks.htm>)

# What are Cold Crackings?

Cold crackings are cracks that occur after a weld has cooled to less than 150°C. They can occur in the weld metal, the heat affected zone (HAZ), or both. As a distinctive feature, in almost all cases, cold crackings are so-called delayed fractures, in which the crack occurs some time after welding.

## What are the causes of cold crackings?

The factors that cause cold crackings can be divided into the three shown below. Cold crackings occur when these factors simultaneously satisfy a certain condition. In other words, it is necessary to control these three factors in order to prevent cold crackings. Preheating, as described previously, is effective for reducing the hydrogen content.

Hydrogen content (H) of the welding consumables: In almost all cases, the cause of elevated hydrogen is moisture absorption by the welding consumables.

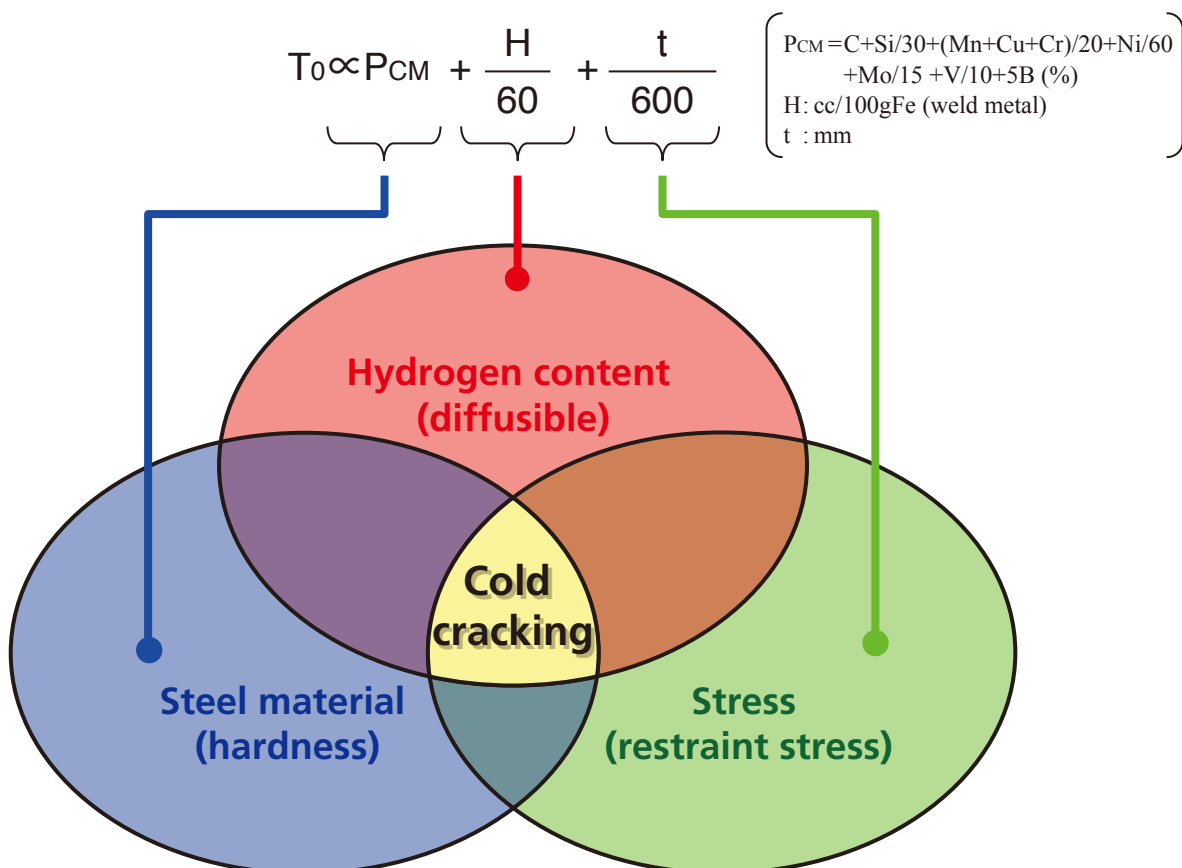
Hardenability of steel material: Known to be closely related to the weld crack sensitivity composition ( $P_{CM}$ ) of steel.

Restraint stress: Proportional to the plate thickness (t) of the joint.

## How can we determine the optimum preheating temperature ( $T_0$ )?

As one method of controlling the three factors mentioned above and determining the necessary preheating temperature for preventing cold crackings, the following relational expression can be used. This expression was obtained experimentally.

Recommended minimum preheating temperature is partially determined by using this expression.





## Example of control of factors causing cold crackings

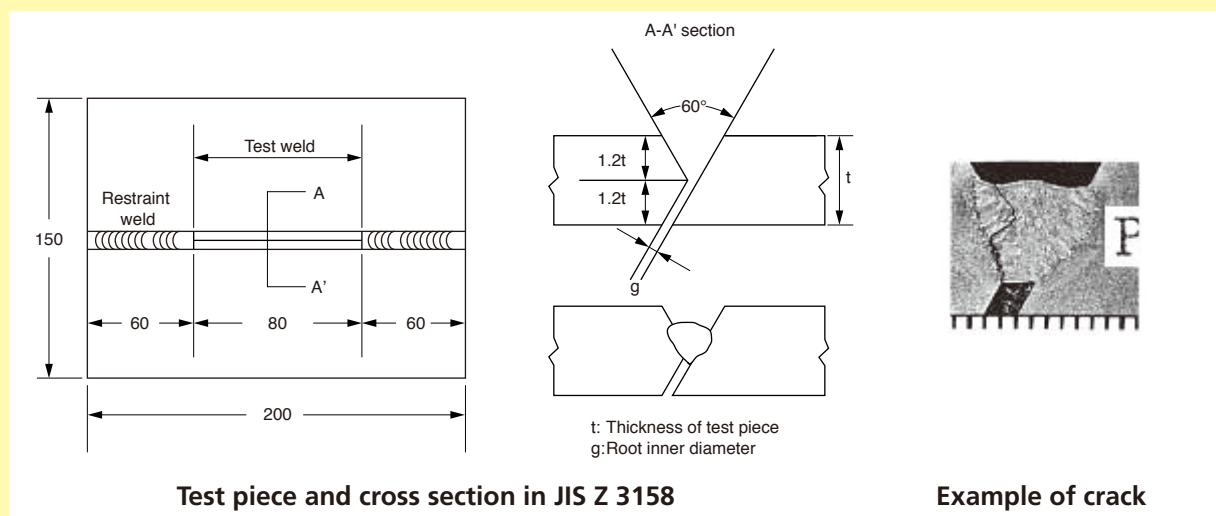
Due to the high hardness and strength of EVERHARD, its cold cracking sensitivity is also higher than that of general steel materials. To prevent cold crackings when welding EVERHARD, the following advance precautions are indispensable.

Factor	Precaution		Remarks
Diffusible hydrogen	Use of low hydrogen (or ultra-low hydrogen) welding consumables (coating material, flux)		In accordance with the standard of the welding consumable (AWS, JIS).
	Proper drying	Drying of welding consumables (coating material, flux)	Example) $350\text{--}400^{\circ}\text{C} \times 1 \text{ hour}$
		Prevention of condensation	Temperature of the materials being welded should be at least $20^{\circ}\text{C}$ or higher.
	Cleaning of joint		Completely remove rust and oil.
Hardness of weld metal and HAZ	Selection of low carbon equivalent steel		Use low $P_{CM}$ design EVERHARD.
	Stable welding		Short bead welding is not permissible. Tack beads must be removed before final welding.
Residual or restraint stress	Joint gap control		Groove gap should be less than 3 mm.

**Hint!**

### ■ Y-Groove Weld Crack Test (JIS Z 3158)

The preheating temperature guidelines recommended by JFE Steel were developed based on experience and data in connection with the y-groove weld crack test, which is specified in JIS Z 3158. Although this is widely known, because the restraint level in this test method is higher than that of actual welded structural joints, the preheating temperature obtained by this method is strict (higher, i.e., safer). In case of problems in actual preheating using these guidelines, please contact JFE Steel.



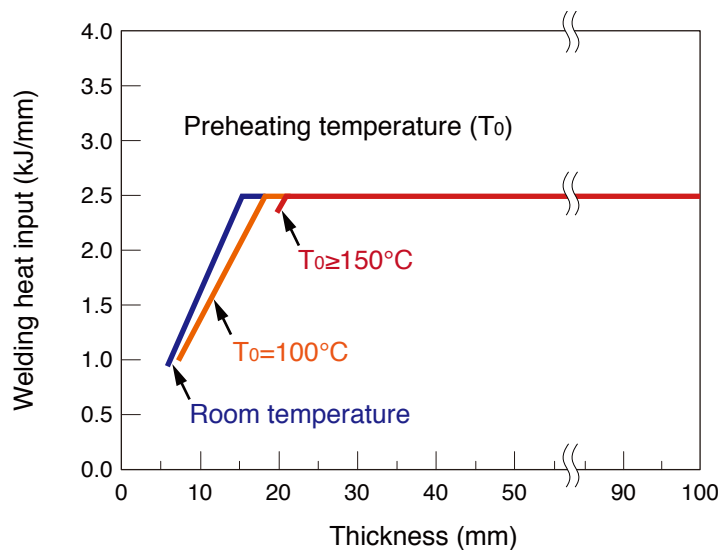
# Welding Heat Input for EVERHARD

In order to satisfy mechanical performance requirements and obtain sound welds with minimal thermal stress efficiently as planned, it is important to use the proper welding heat input in welding work.

## ■ Maximum heat input (recommended)

The following figure shows the maximum welding heat input for maintaining weld soundness as far as possible.

Although somewhat different depending on the preheating temperature ( $T_0$ ) of steel plates, the maximum welding heat input increases linearly with the thickness of the plate, and becomes constant when the thickness exceeds about 20 mm. For actual welding, JFE Steel recommends use of a smaller heat input than the line shown in this figure.



## ■ Calculation of welding heat input

Welding heat input is calculated from the following equation.

$$H = \frac{I \times V}{v} \times 0.06$$

{	H : Welding heat input (kJ/cm)
	I : Welding current (A)
	V : Welding voltage (V)
	v : Welding speed (cm/min)

## ■ Related Precautions!

Particularly in multilayer welding, softening may occur in the heat affected zone (HAZ). Therefore, when performing multilayer welding, wait until the temperature of the previous weld bead has decreased to less than about  $250^\circ\text{C}$ . At this time, the temperature should be measured at a point within 10 mm from the previous bead.

Short bead welding and the type of unstable (unsteady) welding called spot welding not only cause fatal welding defects, but also result in larger-than-expected hardening of the microstructure accompanying the rapid cooling phenomenon, and this increases the risk of cold crackings. In welding in a stable, steady condition (uniform cooling), use a bead length of more than 50 mm.

# Suitable Welding Consumables for EVERHARD

General abrasion-resistant steel plates, including EVERHARD, are especially designed to obtain high hardness to improve abrasion resistance, if general commercial welding materials (welding consumables) are used in welding, the hardness of the weld may be low in comparison with the abrasion-resistant steel base material. This condition, in which the hardness of the weld is lower than that of the base material (abrasion-resistant steel) is called "under-matching." Welds of buildings, etc. are designed as over-matching, i.e., the hardness of the weld is higher than that of the base material, so that cracks will not originate from the welds, but this is difficult with abrasion-resistant steels. Thus, care is necessary when welding abrasion-resistant steels. On the other hand, because the cold cracking sensitivity of abrasion-resistant steels is high in comparison with general steel materials, we recommend under-matched welding, in which generation of stress on the base material side is difficult, from the viewpoint of cracking during welding.

The next point is the actual selection of the welding consumable. From the viewpoint of prevention of cold crackings, we recommend the use of either a low hydrogen type or an ultra-low hydrogen type of welding consumable. In the case of buckets, vessels and other structural parts where weld strength is critical, the welding consumable should be selected in accordance with the strength design of the welded joint. In welds of liner plates and similar parts in which weld strength is not particularly necessary, we recommend selection of a welding consumable with the lowest possible strength in comparison with the base material in order to prevent cold crackings.

The following table gives examples of the applicable welding consumables for use with EVERHARD.

## ■ Examples of Applicable Coated Electrodes

Grade	Shield metal arc welding (SMAW)		
	KOBELCO brand name	AWS*	Others
400MPa	LB-47A	E7016	LINCOLN ELECTRIC (USA) METRODE (UK) HYUNDAI WELDING (KOREA) ESAB (SWEDEN) OERLIKON (GERMANY) BOEHLER (GERMANY)
490MPa	LB-52 LB-52UL		
590MPa	LB-62 LB-62UL	E9016-G	
780MPa	LB-116 LB-80UL	E11016-G	

\*AWS: The American Welding Society

## ■ Examples of Applicable Flux Cored Wires

Grade	Flux cored arc welding (FCAW)		
	KOBELCO brand name	AWS*	Others
400-490MPa	DW-100, MX-100	E70T-1C	LINCOLN ELECTRIC (USA) HYUNDAI WELDING (KOREA) ESAB (SWEDEN) OERLIKON (GERMANY) BOEHLER (GERMANY)
590MPa	DW-60, MX-60	E81T1-Ni1C	

\*AWS: The American Welding Society

## ■ Examples of Applicable Solid Wires

Grade	Gas metal arc welding (GMAW)		
	KOBELCO brand name	AWS*	Others
400-490MPa	MG-50 MGS-50	ER70S-G	LINCOLN ELECTRIC (USA) METRODE (UK) HYUNDAI WELDING (KOREA) ESAB (SWEDEN) OERLIKON (GERMANY) BOEHLER (GERMANY)
590MPa	MG-60	ER80S-G	
	MGS-63B	ER90S-G	
780MPa	MGS-80	ER110S-G	

\*AWS: The American Welding Society



# Welding Shield Gas for EVERHARD

Welding of EVERHARD does not require any change in the condition of shield gas. The gas type, flow rate, etc. recommended for the welding consumable being used can also be applied to EVERHARD without change.

Examples of the shield gases applied with KOBELCO's GMAW welding consumables, which are recommended for welding of EVERHARD, are shown in the following table.

## ■ Examples of Shield Gases applied with KOBELCO GMAW Welding Consumables

Grade	Gas metal arc welding (GMAW)		
	KOBELCO brand name	Shield gas	AWS* grade
400-490MPa	MG-50	CO <sub>2</sub>	ER70S-G
	MGS-50	Ar+CO <sub>2</sub>	
590MPa	MG-60	CO <sub>2</sub>	ER80S-G ER90S-G
	MGS-63B	Ar+CO <sub>2</sub>	
780MPa	MGS-80	Ar+CO <sub>2</sub>	ER110S-G

\* AWS: The American Welding Society



Gas metal arc welding (GMAW): Example of carbon dioxide gas shielded arc welding

# Welding Start/Final Ends and Gap

In general, defects such as blowholes and lack of penetration, craters and flowing-down of the weld metal occur easily at the start and final ends of welding. This is because welding is unstable (unsteady condition) at the start and final ends. At the start/final ends of welds, the following measures are effective for preventing these types of welding defects. These measures are particularly recommended when welding EVERHARD.

## ■ Measures for start/final end of welding

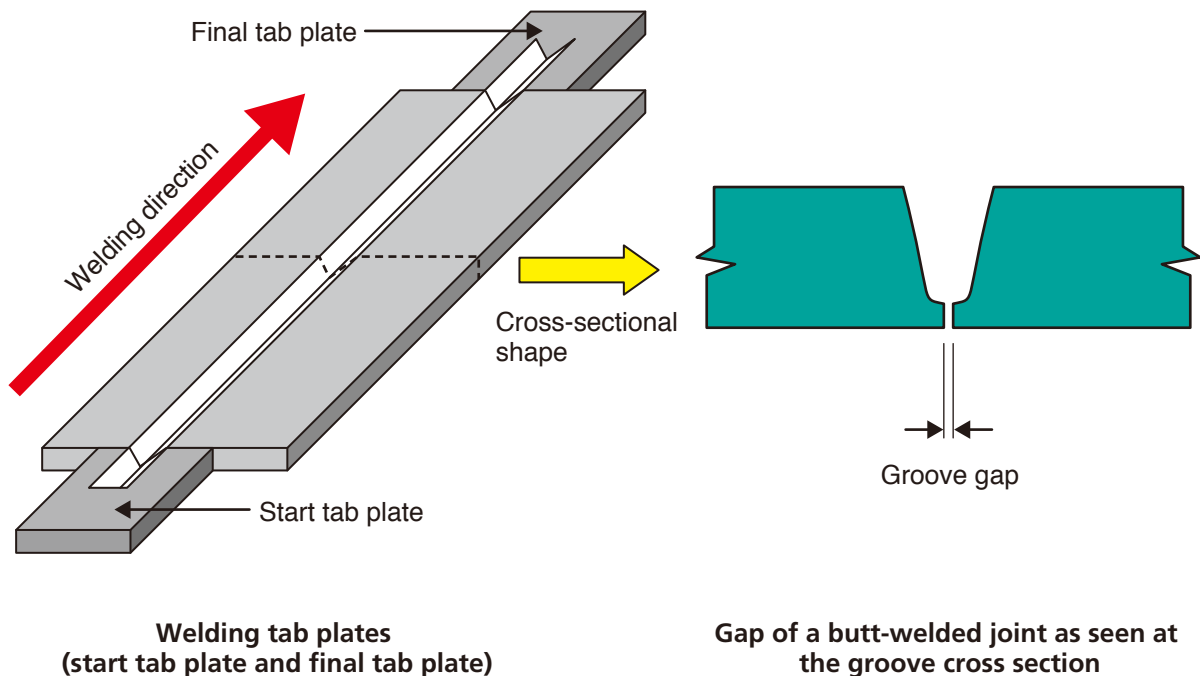
Normally, rectangular steel plates are attached to the start and final ends of welds as welding tab plates. Care should be taken to match the tab plate center line with the welding seam. As shown at the lower left, welding begins on the start tab plate attached to the start end and ends on the final tab plate. Care should be used so that the length of the beads on the tab plates is sufficient to enable stable welding (for example, 50 mm or more).

A sound weld can be obtained by removing the two tab plates after welding is finished.

## ■ Groove Gap

The groove gap of welded joints is a critical control item for preventing weld defects. Normally, the gap of the grooves in butt and fillet welding should be less than 3 mm. The groove gap is shown schematically at the lower right.

As mentioned previously, this control is also effective for preventing cold crackings.



# Hardfacing of EVERHARD

Hardfacing of EVERHARD is possible. However, when applying hardfacing, the following precautions are generally necessary.

(Care is required, as EVERHARD is intrinsically hard, and applying an even harder hardfacing may result in easier cracking than normal.)

## 1) Preparation of base material (EVERHARD)

To prevent blowholes in the hard-faced material, remove all rust, oil, sand and other foreign matters completely.

## 2) Temperature control

To prevent weld cracks, not only preheating, but also interpass temperature control and temperature control in post weld heat treatment are important. Please note the key points in the above-mentioned guidelines for temperature measurement of EVERHARD.

## 3) Underlaying and dilution control

One effective method for securing the required hardness of the hardfacing layer is underlaying. For best results, in this case, JFE Steel recommends the use of a mild steel grade low hydrogen welding consumable or an authentic welding consumable. Multilayer hardfacing is also a possible option.

## 4) Strain control

Welding procedure that forms a symmetrical weld bead or intermittent welding, by appropriately using restraint, is also effective for minimizing welding distortion.

# Post Weld Heat Treatment of EVERHARD

In welding of pressure vessels, post weld heat treatment (PWHT) is generally performed to remove residual stress. However, this practice is not recommended to EVERHARD because PWHT will seriously affect the mechanical properties and abrasion resistance of EVERHARD.

In cases where PWHT is unavoidably necessary, please be sure to consult with JFE Steel.





## Primer Treatment of EVERHARD

JFE Steel also provides the EVERHARD with primer (paint) treatment upon request.

As a shop primer, JFE normally uses SD ZINC 1000HA (S) manufactured by ALESCO (Kansai Paint Co., Ltd.). This primer consists of modified alkyl silicate binder and zinc (Zn) powder with improved performance. It displays excellent cutting properties and weldability, and also minimizes generation of pitting and blowholes during CO<sub>2</sub> gas shielded arc welding. It is also possible to select SD ZINC 1000 JLECT™ with enhanced corrosion resistance and laser cuttability.

In order to provide this performance, the thickness of the primer layer is strictly controlled within the optimum range.



Typical appearance of primer-treated Standard Series plate (EVERHARD-C500 (JFE-EH-C500))

**When performing cutting or welding work, be sure to use proper ventilation and wear a protective mask.**

## Storage

EVERHARD plates should be stored so as to avoid bending and twisting. Use waterproof sheets to prevent rust and pitting due to corrosion, which can cause cracking. When using a waterproof sheet, ventilate occasionally to reduce humidity under the sheet.

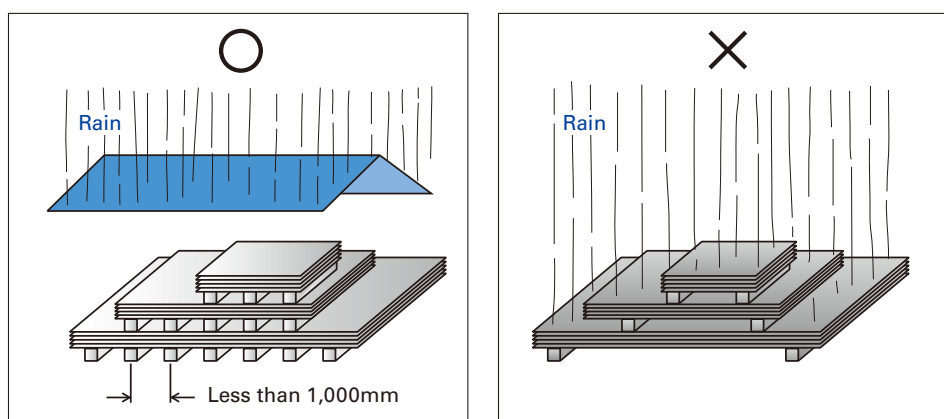


Fig. Recommended storage method

**JFE Steel Corporation**<https://www.jfe-steel.co.jp/en/>**HEAD OFFICE**

Hibiya Kokusai Building, 2-3 Uchisaiwaicho 2-chome, Chiyodaku, Tokyo 100-0011, Japan Phone: (81)3-3597-3111 Fax: (81)3-3597-4860

**■ ASIA PACIFIC****SEOUL**JFE Steel Korea Corporation  
16th Floor, 41, Cheonggyecheon-ro, Jongno-gu, Seoul,  
03188, Korea  
(Youngpung Building, Seorin-dong)  
Phone: (82)2-399-6337 Fax: (82)2-399-6347**SHANGHAI**JFE Consulting (Shanghai) Co., Ltd.  
Room 801, Building A, Far East International Plaza,  
319 Xianxia Road, Shanghai 200051, P.R.China  
Phone: (86)21-6235-1345 Fax: (86)21-6235-1346**BEIJING**JFE Consulting (Shanghai) Co., Ltd. Beijing Branch  
821 Beijing Fortune Building No.5 Dongsanhuan  
North Road, Chaoyang District, Beijing, 100004,  
P.R.China  
Phone: (86)10-6590-9051**GUANGZHOU**JFE Consulting (Guangzhou) Co., Ltd.  
Room 3901 Citic Plaza, 233 Tian He North Road,  
Guangzhou, 510613, P.R.China  
Phone: (86)20-3891-2467 Fax: (86)20-3891-2469**MANILA**JFE Steel Corporation, Manila Office  
23rd Floor 6788 Ayala Avenue, Oledan Square,  
Makati City, Metro Manila, Philippines  
Phone: (63)2-8886-7432 Fax: (63)2-8886-7315**HO CHI MINH CITY**JFE Steel Vietnam Co., Ltd.  
Unit 1704, 17th Floor, MPlaza, 39 Le Duan Street,  
Dist 1, HCMC, Vietnam  
Phone: (84)28-3825-8576 Fax: (84)28-3825-8562**HANOI**JFE Steel Vietnam Co., Ltd., Hanoi Branch  
Unit 2314, 23rd Floor-West, Lotte Center Hanoi,  
54 Lieu Giai Street, Cong Vi Ward, Ba Dinh District,  
Hanoi, Vietnam  
Phone: (84)24-3855-2266 Fax: (84)24-3533-1166**BANGKOK**JFE Steel (Thailand) Ltd.  
22nd Floor, Abdulrahim Place 990, Rama IV Road,  
Silom, Bangrak, Bangkok 10500, Thailand  
Phone: (66)2-636-1886 Fax: (66)2-636-1891**YANGON**JFE Steel (Thailand) Ltd., Yangon Office  
Unit 05-01, Union Business Center, Nat Mauk Road,  
Bocho Quarter, Bahan Tsp, Yangon, 11201, Myanmar  
Phone: (95)1-860-3352**SINGAPORE**JFE Steel Asia Pte. Ltd.  
16 Raffles Quay, No.15-03, Hong Leong Building,  
048581, Singapore  
Phone: (65)6220-1174 Fax: (65)6224-8357**JAKARTA**PT. JFE STEEL INDONESIA  
6th Floor Summitmas II, JL Jendral Sudirman Kav.  
61-62, Jakarta 12190, Indonesia  
Phone: (62)21-522-6405 Fax: (62)21-522-6408**NEW DELHI**JFE Steel India Private Limited  
806, 8th Floor, Tower-B, Unitech Signature Towers,  
South City-I, NH-8, Gurgaon-122001, Haryana, India  
Phone: (91)124-426-4981 Fax: (91)124-426-4982**MUMBAI**JFE Steel India Private Limited, Mumbai Office  
603-604, A Wing, 215 Atrium Building, Andheri-Kurla  
Road, Andheri (East), Mumbai-400093, Maharashtra,  
India  
Phone: (91)22-3076-2760 Fax: (91)22-3076-2764**BRISBANE**JFE Steel Australia Resources Pty Ltd.  
Level28, 12 Creek Street, Brisbane QLD 4000  
Australia  
Phone: (61)7-3229-3855 Fax: (61)7-3229-4377**■ MIDDLE EAST****DUBAI**JFE Steel Corporation, Dubai Office  
P.O.Box 261791 LOB19-1208, Jebel Ali Free Zone  
Dubai, U.A.E.  
Phone: (971)4-884-1833 Fax: (971)4-884-1472**■ NORTH, CENTRAL and SOUTH AMERICA****HOUSTON**JFE Steel America, Inc.  
750 Town & Country Blvd., Suite 705, Houston,  
TX 77024, U.S.A.  
Phone: (1)713-532-0052 Fax: (1)713-532-0062**MEXICO CITY**JFE Steel de Mexico S.A. de C.V.  
Ruben Dario #281-1002, Col. Bosque de  
Chapultepec, C.P. 11580, CDMX. D.F. Mexico  
Phone: (52)55-5985-0097**RIO DE JANEIRO**JFE Steel do Brasil LTDA  
Praia de Botafogo, 228 Setor B, Salas 508 & 509,  
Botafogo, CEP 22250-040, Rio de Janeiro-RJ, Brazil  
Phone: (55)21-2553-1132 Fax: (55)21-2553-3430**Notice**

While every effort has been made to ensure the accuracy of the information contained within this publication, the use of the information is at the reader's risk and no warranty is implied or expressed by JFE Steel Corporation with respect to the use of information contained herein. The information in this publication is subject to change or modification without notice. Please contact the JFE Steel office for the latest information.