



Cat. No. E1E-014-10



HOUSTON
10777 Westheimer, Suite 1010
Houston, TX 77042
USA
TEL +1 713-986-9000

JFE-TC
technical
centers
jfec.com

SINGAPORE
31 Jurong Port Rd
05-10 Jurong Logistics Hub
Singapore 619115
TEL +65-6264-1801

JFE Steel Corporation

<http://www.jfe-steel.co.jp/en/>

HEAD OFFICE

Hibiya Kokusai Building, 2-3 Uchisaiwaicho 2-chome, Chiyodaku, Tokyo 100-0011, Japan

Phone: (81)3-3597-3111 Fax: (81)3-3597-4860

» ASIA PACIFIC

SEOUL

JFE Steel Korea Corporation
6th Floor, 410, Teheran-ro, Gangnam-gu, Seoul,
135-570, Korea (Geumgang-Tower, Daechi-dong)
Phone: (82)2-3468-4130 Fax: (82)2-3468-4137

BEIJING

JFE Steel Corporation Beijing
1009 Beijing Fortune Building No.5, Dongsanhuan
North Road, Chaoyang District, Beijing, 100004,
P.R.China
Phone: (86)10-6590-9051 Fax: (86)10-6590-9056

SHANGHAI

JFE Consulting (Shanghai) Co., Ltd.
Room 801, Building A, Far East International Plaza,
319 Xianxia Road, Shanghai 200051, P.R.China
Phone: (86)21-6235-1345 Fax: (86)21-6235-1346

GUANGZHOU

JFE Consulting (Guangzhou) Co., Ltd.
Room 3901, Citic Plaza, 233 Tian He North Road,
Guangzhou 510613, P.R.China
Phone: (86)20-3891-2467 Fax: (86)20-3891-2469

MANILA

JFE Steel Corporation, Manila Office
23rd Floor 6788 Ayala Avenue, Oledan Square,
Makati City, Metro Manila, Philippines
Phone: (63)2-886-7432 Fax: (63)2-886-7315

HO CHI MINH CITY

JFE Steel Vietnam Co., Ltd.
Unit 1401, 14th Floor, Kumho Asiana Plaza,
39 Le Duan Street, Dist 1, HCMC, Vietnam
Phone: (84)8-3825-8576 Fax: (84)8-3825-8562

HANOI

JFE Steel Vietnam Co., Ltd., Hanoi Branch
Unit 510, 5th Floor, Hanoi Press Club, 59A Ly Thai
To Street, Hoan Kiem Dist., Hanoi, Vietnam
Phone: (84)4-3936-7776 Fax: (84)4-3936-7775

BANGKOK

JFE Steel (Thailand) Ltd.
22nd Floor, Abdulrahim Place 990, Rama IV Road,
Bangkok 10500, Thailand
Phone: (66)2-636-1886 Fax: (66)2-636-1891

SINGAPORE

JFE Steel Asia Pte. Ltd.
16 Raffles Quay, No. 15-03, Hong Leong Building,
048581, Singapore
Phone: (65)6220-1174 Fax: (65)6224-8357

JAKARTA

JFE Steel Corporation, Jakarta Office
6th Floor Summitmas II, JL Jendral Sudirman Kav.
61-62, Jakarta 12190, Indonesia
Phone: (62)21-522-6405 Fax: (62)21-522-6408

NEW DELHI

JFE Steel India Private Limited
806, 8th Floor, Tower-B, Unitech Signature Towers,
South City-I, NH-8, Gurgaon 122001, Haryana, India
Phone: (91)124-426-4981 Fax: (91)124-426-4982

MUMBAI

JFE Steel India Private Limited, Mumbai Office
308, A Wing, 215 Atrium, Andheri - Kurla Road, And-
heri (East), Mumbai - 400093, Maharashtra, INDIA
Phone: (91)22-3076-2760 Fax: (91)22-3076-2764

CHENNAI

JFE Steel India Private Limited, Chennai Office
Ground Floor, SPIC Annexe Building, No.86, Mount
Road, Guindy, Chennai - 600032, Tamil Nadu, India
Phone: (91)44-2230-0285 Fax: (91)44-2230-0287

BRISBANE

JFE Steel Australia Resources Pty Ltd.
Level 28, 12 Creek Street, Brisbane, QLD 4000,
Australia
Phone: (61)7-3229-3855 Fax: (61)7-3229-4377

» EUROPE and MIDDLE EAST

LONDON

JFE Steel Europe Limited
15th Floor, The Broadgate Tower, 20 Primrose
Street, London EC2A 2EW, U.K.
Phone: (44)20-7426-0166 Fax: (44)20-7247-0168

DUBAI

JFE Steel Corporation, Dubai Office
P.O.Box 261791 LOB19-1208, Jebel Ali Free Zone
Dubai, U.A.E.
Phone: (971)4-884-1833 Fax: (971)4-884-1472

» NORTH, CENTRAL and SOUTH AMERICA

NEW YORK

JFE Steel America, Inc.
600 Third Avenue, 12th Floor, New York, NY 10016,
U.S.A.
Phone: (1)212-310-9320 Fax: (1)212-308-9292

HOUSTON

JFE Steel America, Inc., Houston Office
10777 Westheimer, Suite 230, Houston, TX 77042,
U.S.A.
Phone: (1)713-532-0052 Fax: (1)713-532-0062

MEXICO CITY

JFE Steel America, Inc., Mexico Office
Ruben Dario #281, 1404 Col. Bosque de Chapulte-
pec, C.P. 11580, Mexico, D.F. Mexico Phone:
(52)55-5985-0097 Fax: (52)55-5985-0099

RIO DE JANEIRO

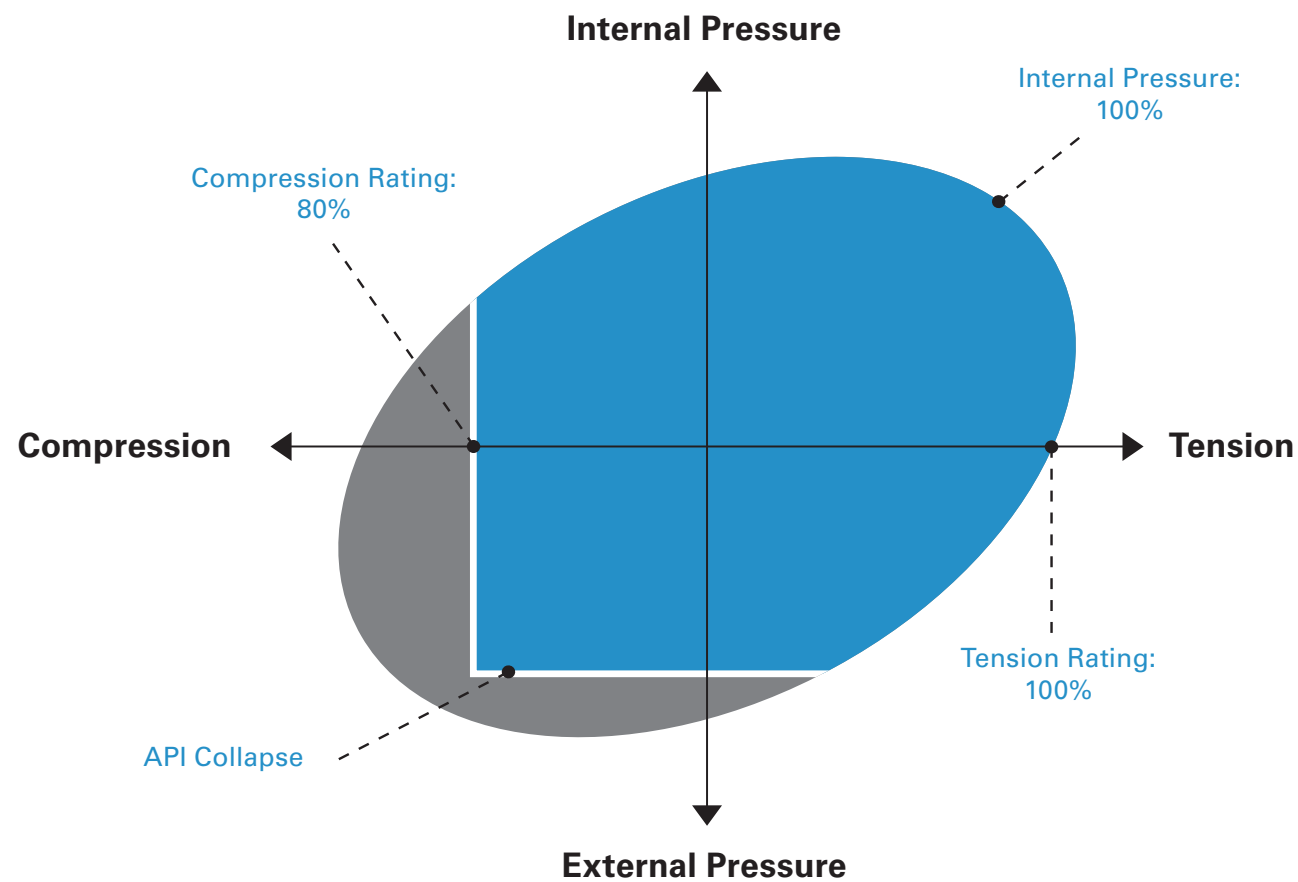
JFE Steel do Brasil LTDA
Praia de Botafogo, 228 Setor B, Salas 508 & 509,
Botafogo, CEP 22250-040, Rio de Janeiro-RJ, Brazil
Phone: (55)21-2553-1132 Fax: (55)21-2553-3430



Notice

While every effort has been made to ensure the accuracy of the information contained within this publication, the use of the information is at the reader's risk and no warranty is implied or expressed by JFE Steel Corporation with respect to the use of information contained herein. The information in this publication is subject to change or modification without notice. Please contact the JFE Steel office for the latest information.

JFEBEAR™ Connection Performance Envelope



Available Size Range

2 3/8" to 9 5/8"

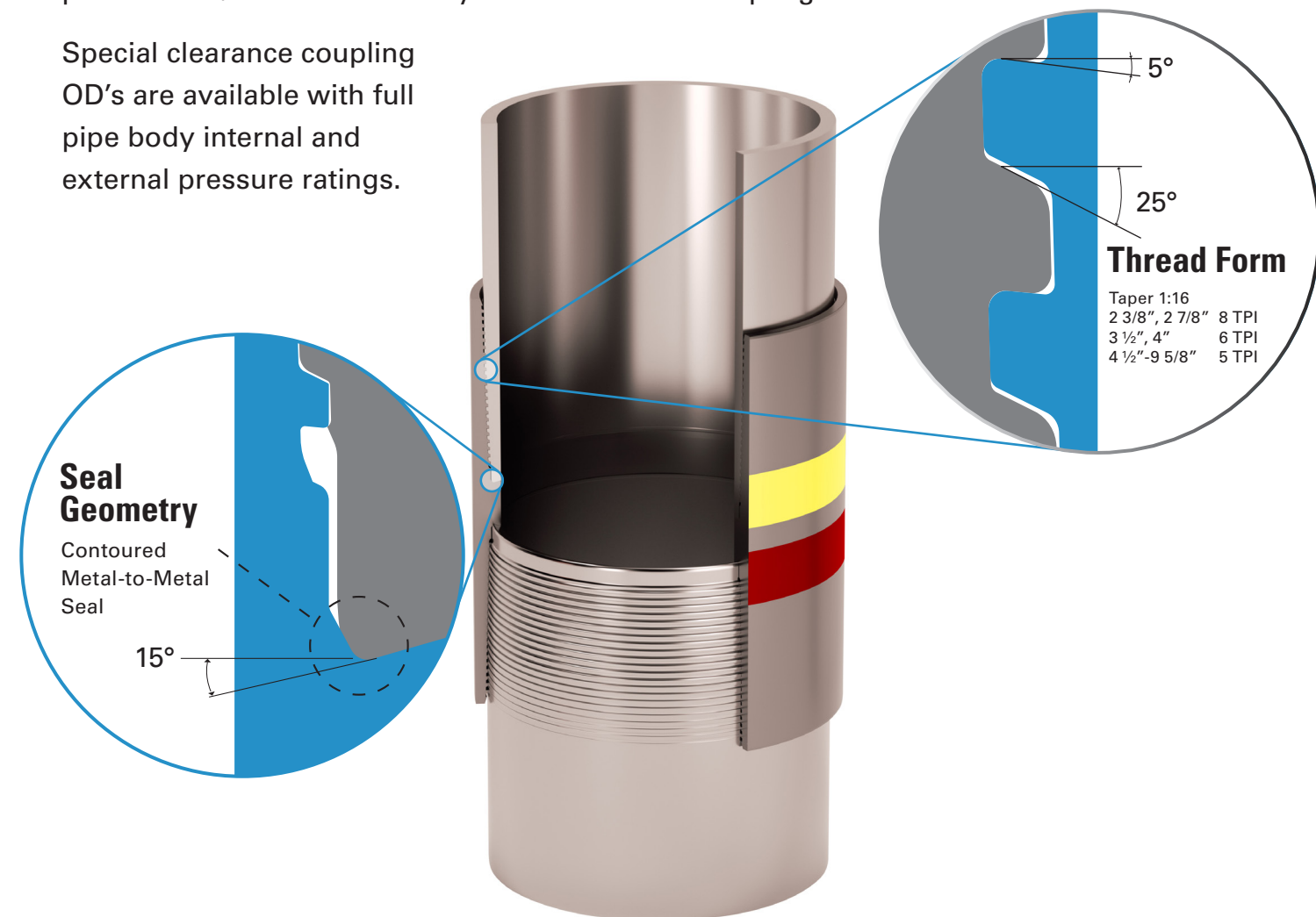
Wall Thickness

Up to 0.687"

- Run-out pin thread and coupling provide 100% pipe body tension
- Standard and special clearance coupling ODs
- Carbon steel and Chrome grades
- Streamlined ID profile design
- Tested with ISO 13679 2002 and DIS 2009 and field-proven
- Available with the Hunting CLEAR-RUN™ option

JFEBEAR™ has been designed and tested to meet the needs for critical well loads. The design incorporates metal-to-metal seals with a 15° internal torque shoulder to ensure sealing under extreme loads. The negative load flank thread form and coupled design provide 100% tensile efficiency for the standard coupling.

Special clearance coupling OD's are available with full pipe body internal and external pressure ratings.



Design Advantage

- Negative (-5°) load flank angle on threads ➔ Superior bending capability due to hook threads
- 25° angle for thread stabbing flank ➔ Excellent stabbing performance due to high stabbing flank angle
- 15° torque shoulder ➔ Reduced hoop stress
- Reduced gap between stabbing flanks on pipe and coupling thread ➔ High compression rating & galling resistance due to optimum gap
- Contour metal-to-metal seal between pin and coupling ➔ Galling resistance due to point seal type

Note: All data published in this catalog is accurate at time of publishing and are subject to change. Please consult JFETC.com for current performance and torque data.

STANDARD CONNECTIONS			PIPE		CONNECTION		
OD	Nominal Weight	Nominal Wall	Nominal Pipe ID	Pipe Area	Standard Coupling OD	SC90 Coupling OD	SC80 Coupling OD
in	lb/ft	in	in	in ²	in	in	in
2 3/8	4.60	0.190	1.995	1.304	2.728	2.652	2.621
	5.80	0.254	1.867	1.692	2.826	2.735	2.695
	6.60	0.295	1.785	1.928	2.883	2.784	2.739
	7.35	0.336	1.703	2.152	2.883	2.830	2.781
2 7/8	6.40	0.217	2.441	1.812	3.304	3.176	3.140
	7.80	0.276	2.323	2.254	3.368	3.255	3.211
	8.60	0.308	2.259	2.484	3.391	3.295	3.247
	9.35	0.340	2.195	2.708	3.391	3.334	3.282
	10.50	0.392	2.091	3.058	3.514	3.394	3.336
3 1/2	11.50	0.440	1.995	3.366	3.514	3.445	3.383
	7.70	0.216	3.068	2.228	3.883	3.781	3.743
	9.20	0.254	2.992	2.590	3.883	3.836	3.792
	10.20	0.289	2.922	2.915	4.000	3.884	3.836
	12.70	0.375	2.750	3.682	4.122	3.995	3.936
	14.30	0.430	2.640	4.147	4.191	4.061	3.996
	15.50	0.476	2.548	4.522	4.191	4.114	4.043
4	17.00	0.530	2.440	4.945	4.255	4.172	4.096
	9.50	0.226	3.548	2.680	4.384	4.281	4.241
	10.70	0.262	3.476	3.077	4.450	4.334	4.288
	13.20	0.330	3.340	3.805	4.535	4.429	4.374
	14.80	0.380	3.240	4.322	4.587	4.495	4.434
4 1/2	16.10	0.415	3.170	4.674	4.612	4.540	4.474
	11.60	0.250	4.000	3.338	5.000	4.822	4.778
	12.60	0.271	3.958	3.600	5.000	4.853	4.806
	13.50	0.290	3.920	3.836	5.051	4.881	4.831
	15.20	0.337	3.826	4.407	5.148	4.948	4.891
	17.00	0.380	3.740	4.918	5.148	5.007	4.944
	18.90	0.430	3.640	5.498	5.148	5.073	5.003
	21.50	0.500	3.500	6.283	5.324	5.160	5.082
5	23.70	0.560	3.380	6.932	5.324	5.232	5.147
	13.00	0.253	4.494	3.773	5.563	5.318	5.273
	15.00	0.296	4.408	4.374	5.563	5.383	5.331
	18.00	0.362	4.276	5.275	5.639	5.478	5.416
	21.40	0.437	4.126	6.264	5.707	5.580	5.508
	23.20	0.478	4.044	6.791	5.750	5.634	5.557
	24.10	0.500	4.000	7.069	5.750	5.662	5.582

STANDARD CONNECTIONS			PIPE		CONNECTION		
OD	Nominal Weight	Nominal Wall	Nominal Pipe ID	Pipe Area	Standard Coupling OD	SC90 Coupling OD	SC80 Coupling OD
in	lb/ft	in	in	in ²	in	in	in
5 1/2	15.50	0.275	4.950	4.514	6.050	5.855	5.806
	17.00	0.304	4.892	4.962	6.050	5.899	5.845
	20.00	0.361	4.778	5.828	6.104	5.982	5.920
	23.00	0.415	4.670	6.630	6.135	6.058	5.988
	26.00	0.476	4.548	7.513	6.262	6.141	6.063
	26.80	0.500	4.500	7.854	6.262	6.173	6.091
6 5/8	20.00	0.288	6.049	5.734	7.161	6.995	6.942
	24.00	0.352	5.921	6.937	7.277	7.092	7.030
	28.00	0.417	5.791	8.133	7.346	7.188	7.116
	32.00	0.475	5.675	9.177	7.390	7.271	7.190
7	23.00	0.317	6.366	6.655	7.693	7.404	7.347
	26.00	0.362	6.276	7.549	7.693	7.473	7.409
	29.00	0.408	6.184	8.449	7.693	7.542	7.470
	32.00	0.453	6.094	9.317	7.693	7.607	7.529
	35.00	0.498	6.004	10.172	7.829	7.672	7.587
	38.00	0.540	5.920	10.959	7.829	7.730	7.639
	42.70	0.625	5.750	12.517	8.045	7.845	7.743
	46.40	0.687	5.626	13.625	8.045	7.925	7.815
7 5/8	29.70	0.375	6.875	8.541	8.277	8.111	8.043
	33.70	0.430	6.765	9.720	8.277	8.193	8.118
	39.00	0.500	6.625	11.192	8.500	8.296	8.209
	42.80	0.562	6.501	12.470	8.500	8.384	8.288
	45.30	0.595	6.435	13.141	8.538	8.429	8.329
7 3/4	46.10	0.595	6.560	13.374	8.665	8.556	8.456
8 5/8	32.00	0.352	7.921	9.149	9.318	9.080	9.016
	36.00	0.400	7.825	10.336	9.318	9.155	9.082
	40.00	0.450	7.725	11.557	9.318	9.231	9.151
	44.00	0.500	7.625	12.763	9.625	9.305	9.217
	49.00	0.557	7.511	14.118	9.625	9.388	9.292
9 5/8	36.00	0.352	8.921	10.254	10.485	10.084	10.019
	40.00	0.395	8.835	11.454	10.485	10.151	10.079
	43.50	0.435	8.755	12.559	10.485	10.214	10.135
	47.00	0.472	8.681	13.572	10.485	10.270	10.186
	53.50	0.545	8.535	15.546	10.485	10.380	10.284
	58.40	0.595	8.435	16.879	10.625	10.453	10.350
	59.40	0.609	8.407	17.250	10.625	10.473	10.368

JFEBEAR™ connections within a given OD are interchangeable with the following provisions:

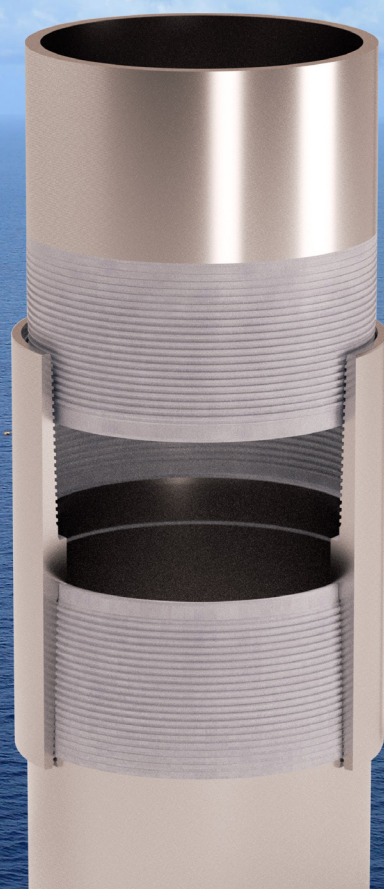
- Pin and box are optimized based on the specified pipe weight. When a lighter weight connection is made up with a heavier weight, a small step may occur depending on the differing connection ID's. Refer to the connection dimensional data to determine the step dimension. When making up a lighter weight to a heavier weight, the torque values for the lighter weight should be used.
- When making up a lighter weight to a heavier weight, the torque values for the lighter weight should be used. Connection performance is that of the lighter weight/lower yield strength connection.
- When making up connections of differing grades (yield strengths), the torque values of the lower yield strength should be used.
- Connection performance is that of the lighter weight/lower yield strength connection.

**Note: For more information pertaining to interchangeability data, please contact JFE-TC.*

JFEBEAR™ connections are available with the Hunting CLEAR-RUN™ advantage



- Environmentally friendly - OSPAR Yellow rating
- Zero contamination of well-bore & formation
- Zero offshore discharge
- No fouling of completion & wire-line equipment
- Field proven - over 6,000,000 feet run
- Safer workspaces, both onshore and offshore
- Improved galling resistance
- Improved operational efficiency
- Delivered rig ready; no need to clean up and re-dope



JFE-TC Global Presence

www.jfetc.com



Technical Centers

JFE-TC HOUSTON

10777 Westheimer, Suite 1010
Houston, TX 77042
USA

TEL +1 713-986-9000

JFE-TC SINGAPORE

31 Jurong Port Rd
05-10 Jurong Logistics Hub
Singapore 619115

TEL +65-6264-1801

Regional Offices

JFE-TC UK ABERDEEN

56 Queens Road,
Aberdeen, AB15 4YE

TEL +44 1224 209333
DIRECT +44 1224 810129
FAX +44 1224 209501

JFE-TC DUBAI

P.O. Box 18192, LOB 16 Office No. 404,
Jebel Ali, Dubai, UAE.

(c/o Marubeni Itochu Steel Inc Jebel Ali Office)

TEL +971-4-8870-988
FAX +971-4-8870-405

JFE-TC BEIJING

Unit 1717-1718 Tower B, Gemdale Plaza,
No. 91, Jianguo Road, Chaoyang District,
Beijing, China

(c/o M-I Tubulars(Beijing) Co., Limited)

TEL +86-10-8580-5881