

Inorganic Chromate-free Coated Hot-dip Galvanized Steel Sheet = JM =

Optimum inorganic chromate-free coating for hot-dip zinc-coated steel sheets

Eco Frontier™ Series

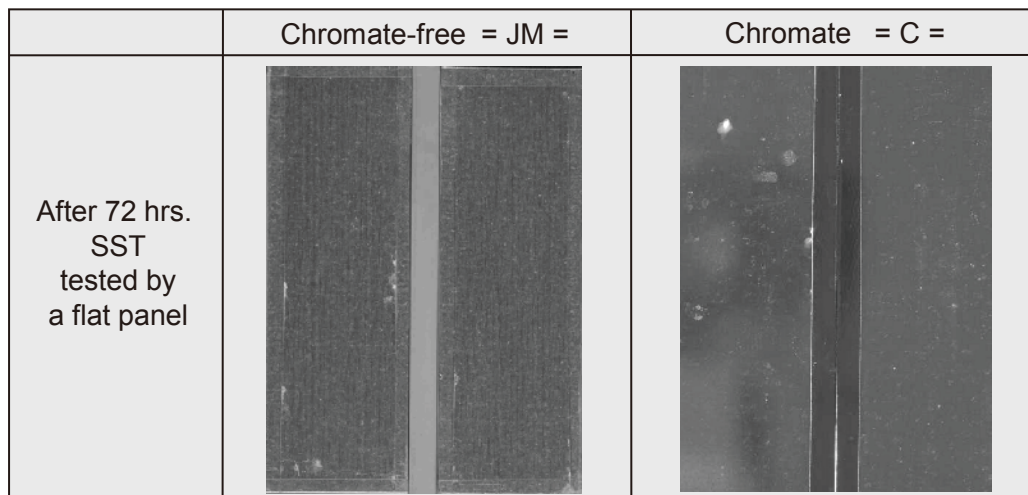
JFE Steel Corporation
<https://www.jfe-steel.co.jp/en/products/sheets>



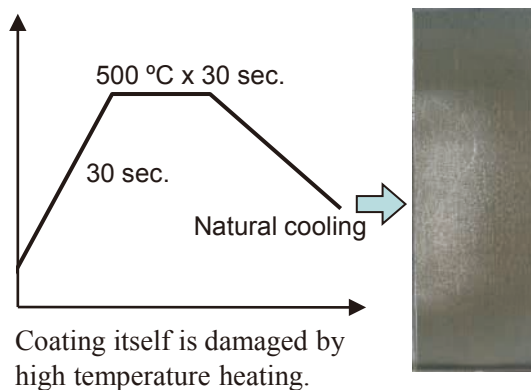
Characteristics

1. Excellent corrosion resistance → White rust area less than 5% after SST 72 hrs
2. Stable coating appearance after heating → Minimum coating deterioration after heating
3. Good spot weldability → Same electrode life as conventional chromate coating *

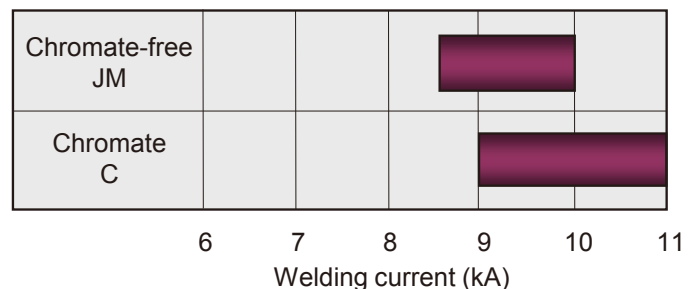
Corrosion resistance (Salt spray test)



Appearance after high temperature heating

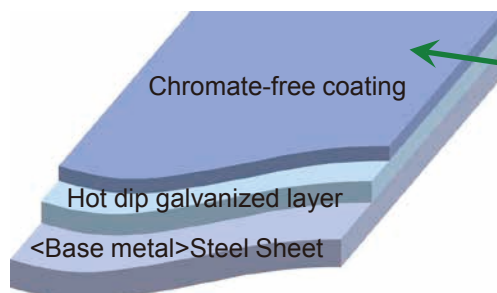


Weldability (Suitable current range)



* Optimum current is different from conventional chromate coat. Current adjustment is required for JM coat.

Structure of coating



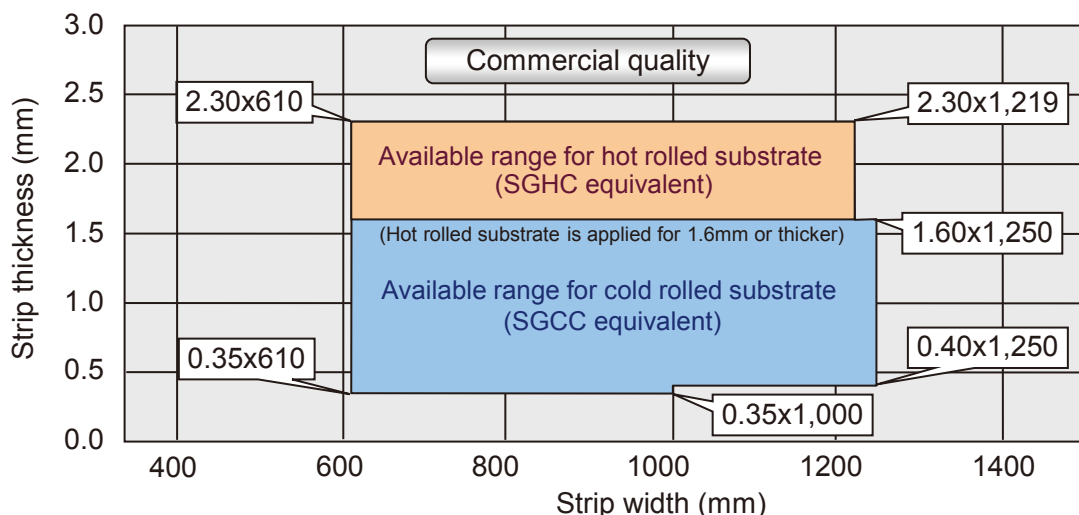
Inorganic chromate-free coating with excellent corrosion resistance and superior weldability ¹⁾

- 1) Surface resistance of JM is higher than that of conventional chromate coat. Please confirm the conductivity of JM.

Applications

- 1) Chassis for electrical appliances, etc.
- 2) Small parts for general applications

Available product size range of “JM”, commercial quality



Remarks; More information is available on other quality.

Steel grade

SGCC-NC-Z08 JM

(A) (B) (C) (E) (F) (G)

JFE-CC-GZ-JM-60/60

(A) (B) (C) (D) (E) (F)

- (A) Standards: SG=JIS hot dip zinc-coated steel sheets standard, JFE=JFE Standard
- (B) Base metal used: C=Cold rolled steel sheets, H=Hot rolled steel sheets
- (C) Classification: (JIS Standard) C=Commercial quality, D1=Drawing quality, class 1, D2=Drawing quality, class 2, D3=Drawing quality, class 3
(JFE Standard) B=Commercial quality, C=Forming quality, D=Drawing quality, E=Deep drawing quality
- (D) Zn coating: GZ=JFE GALVAZINC=JFE hot-dip zinc-coated steel sheets
- (E) Type of chromate-free chemical treatment (1): JIS Standard=NC, JFE Standard=JM
- (F) Zinc coating weight: JIS Standard=Z08, JFE Standard=60/60 (Top side/Bottom side)
- (G) Type of chromate-free chemical treatment (2): JFE Standard equivalent to JIS Standard NC=JM

Remarks on product use

- 1) Coated layer might be removed or discolored during degreasing or cleaning in some case. Please confirm it before use.
- 2) In case of severe bending, deep drawing or use of adhesive tape, there is possibility of whitening or peeling of coated layer. Please confirm it before use.

Contact

JFE Steel Corporation

TOKYO HEAD OFFICE Hibiya Kokusai Building, 2-3 Uchisaiwaicho 2-chome, Chiyodaku, Tokyo 100-0011, Japan
Phone : (81) 3- 3597-3111 Fax : (81) 3-3597-4860

While every effort has been made to ensure the accuracy of the information contained within this publication, the use of the information is at the reader's risk and no warranty is implied or expressed by JFE Steel Corporation with respect to the use of information contained here. The information in this publication is subject to change or modification without notice. Please contact the JFE Steel office for the latest information.